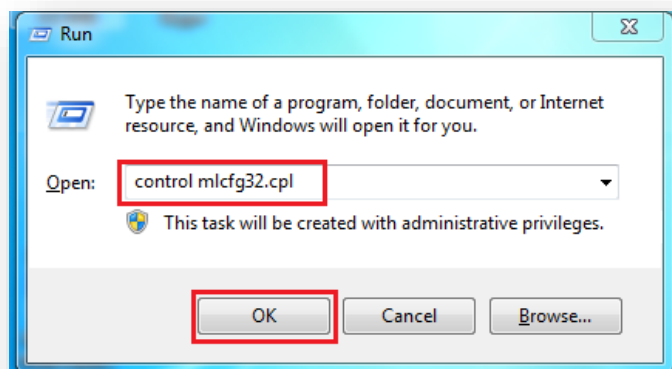




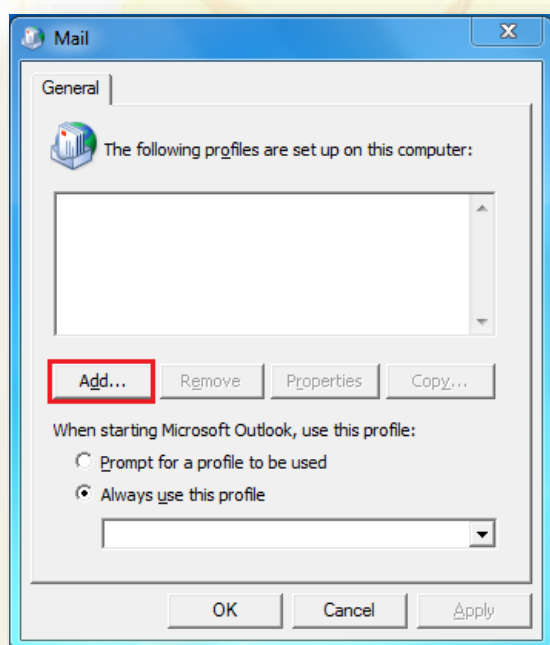
QMAIL OUTLOOK CONFIGURATION FOR VPN

To configure Microsoft Outlook 2010 follow the below steps -:

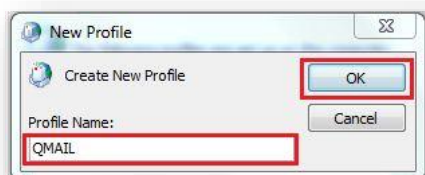
1. Open Run Command and Type **control mlcfg32.cpl** and click OK.



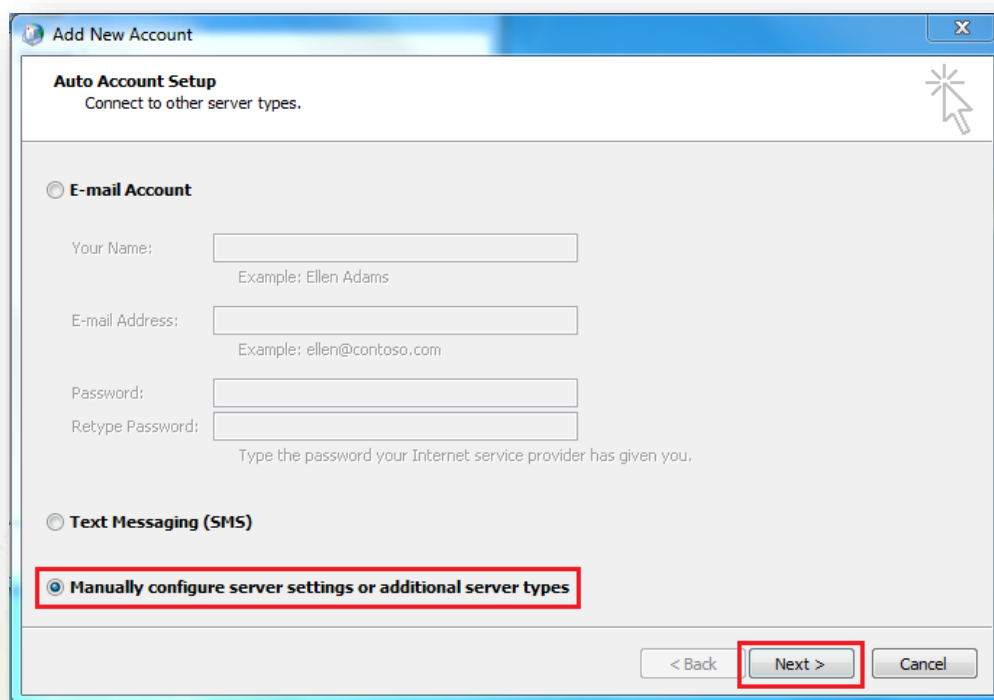
2. Now below window will open, Click on **Add**.



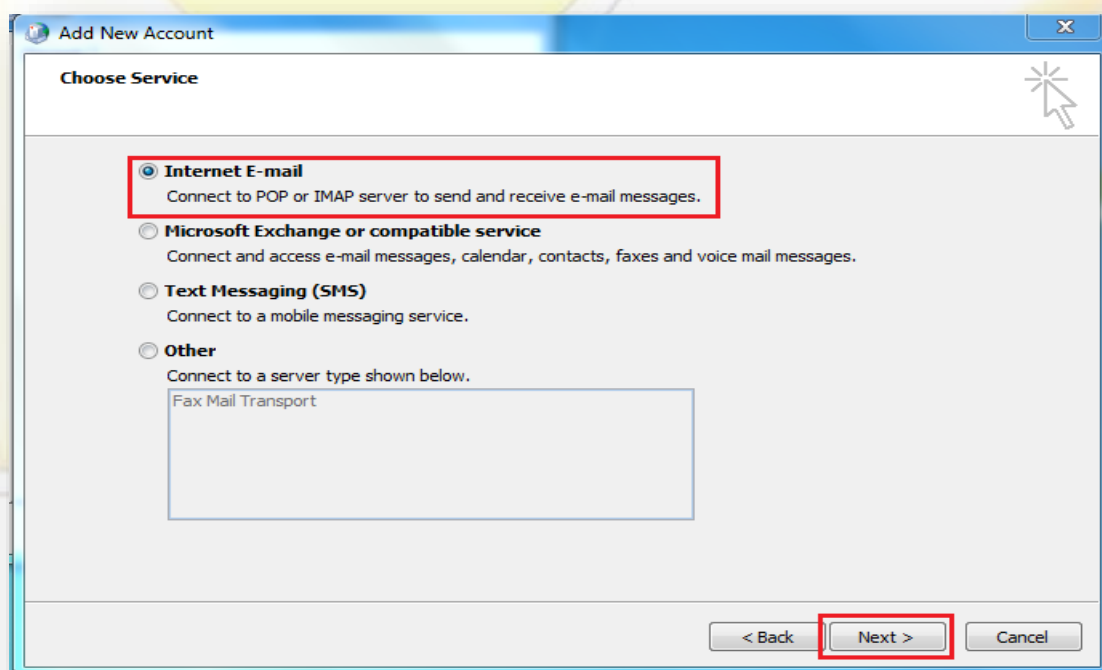
3. Now give a Profile Name (Like "QMAIL") in the below window and Click **OK**.



4. Now below window will open Select **Manually configure server settings or additional server types** and Click on **Next**.



5. Here Select **Internet E-mail** and click on **Next**.



6. Here fill the information as follows:-

- a. Your Name - **Test User** (Write your name here)
- b. Email Address - **test.user@upcctns.gov.in** (Your QMAIL Email Address)

- c. Account Type - POP3
- d. Incoming mail server - 192.168.75.200
- e. Outgoing Mail Server (SMTP) - 192.168.75.200
- f. User Name - test.user (If Email address is test.user@upcctns.gov.in then Username will be test.user only)
- g. Password - Write password of QMAIL ID (Default password is cctns@123)
- h. After filling the above information click on **More Settings**.

Add New Account

Internet E-mail Settings
Each of these settings are required to get your e-mail account working.

User Information

Your Name: Test User

E-mail Address: test.user@upcctns.gov.in

Server Information

Account Type: POP3

Incoming mail server: 192.168.75.200

Outgoing mail server (SMTP): 192.168.75.200

Logon Information

User Name: test.user

Password: *****

☒ Remember password

☐ Require logon using Secure Password Authentication (SPA)

Test Account Settings

After filling out the information on this screen, we recommend you test your account by clicking the button below. (Requires network connection)

Test Account Settings ...

☒ Test Account Settings by clicking the Next button

Deliver new messages to:

☒ New Outlook Data File

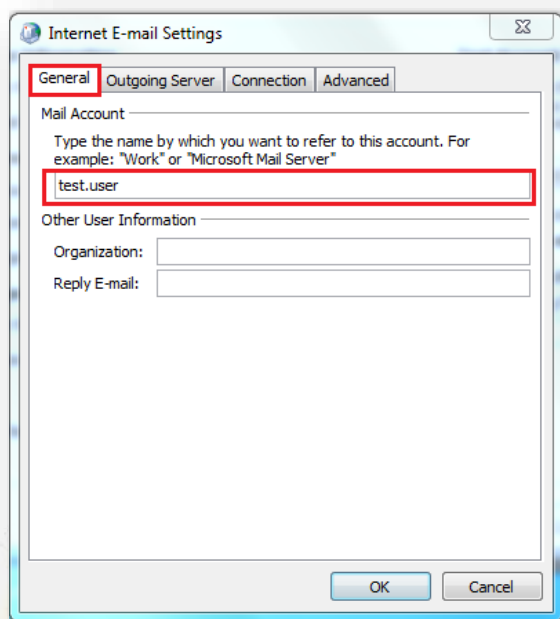
☐ Existing Outlook Data File

Browse

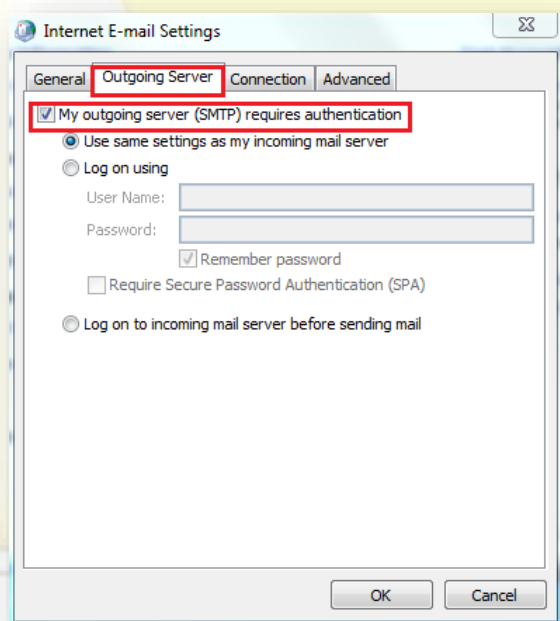
More Settings ...

< Back Next > Cancel

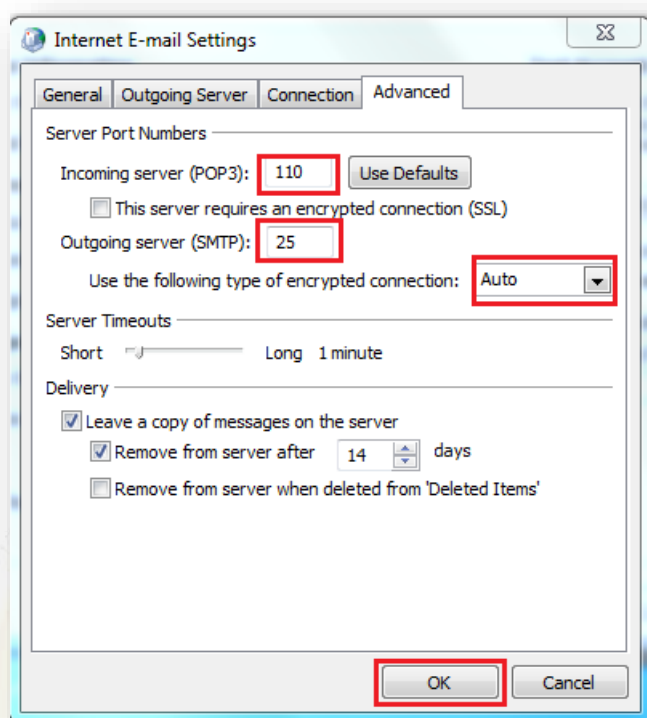
7. Now **Internet E-mail Setting** window will open, here under **General** Tab in **Mail Account** QMAIL E-mail address will display. Check E-mail address should not contain the domain i.e. @upcctns.gov.in. For example if your username is test.user@upcctns.gov.in then in here it will test.user only.



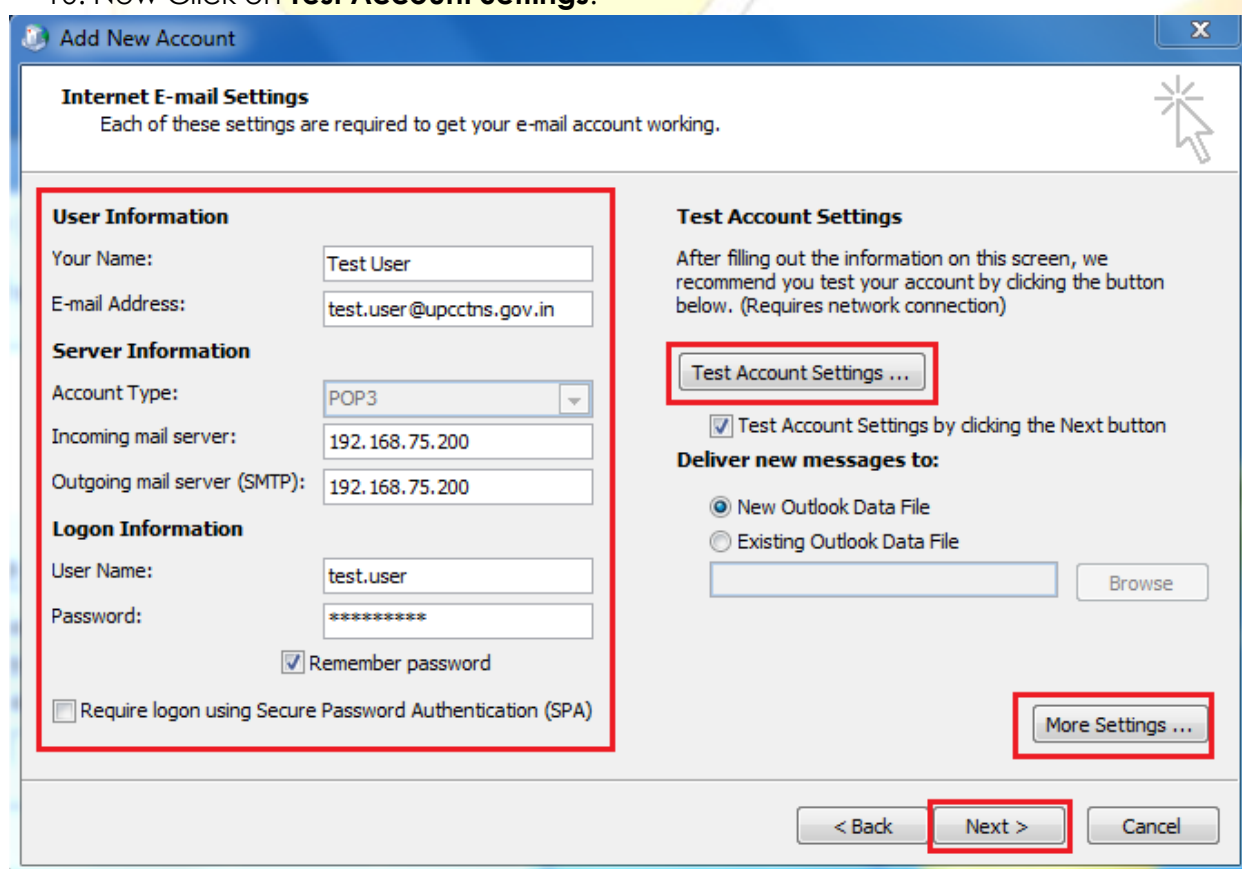
8. Here under **Outgoing Server** tab Check **My outgoing server (SMTP) requires authentication**.



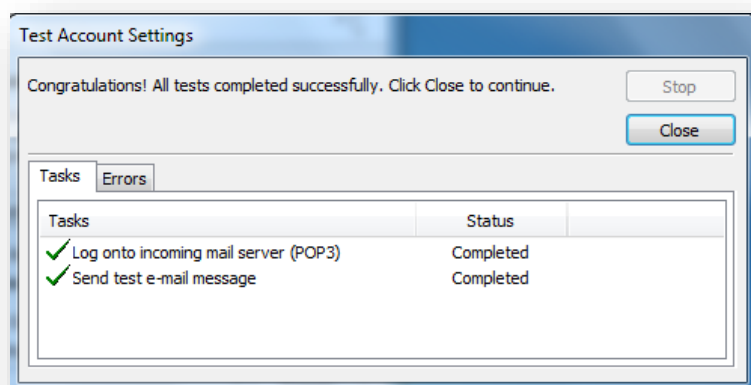
9. Now Under **Advance** tab do the following settings -:
- Incoming server (POP3) - **110**
 - Outgoing Server - **25**
 - Use the following type of encrypted connection - **Auto**
 - Click **OK**



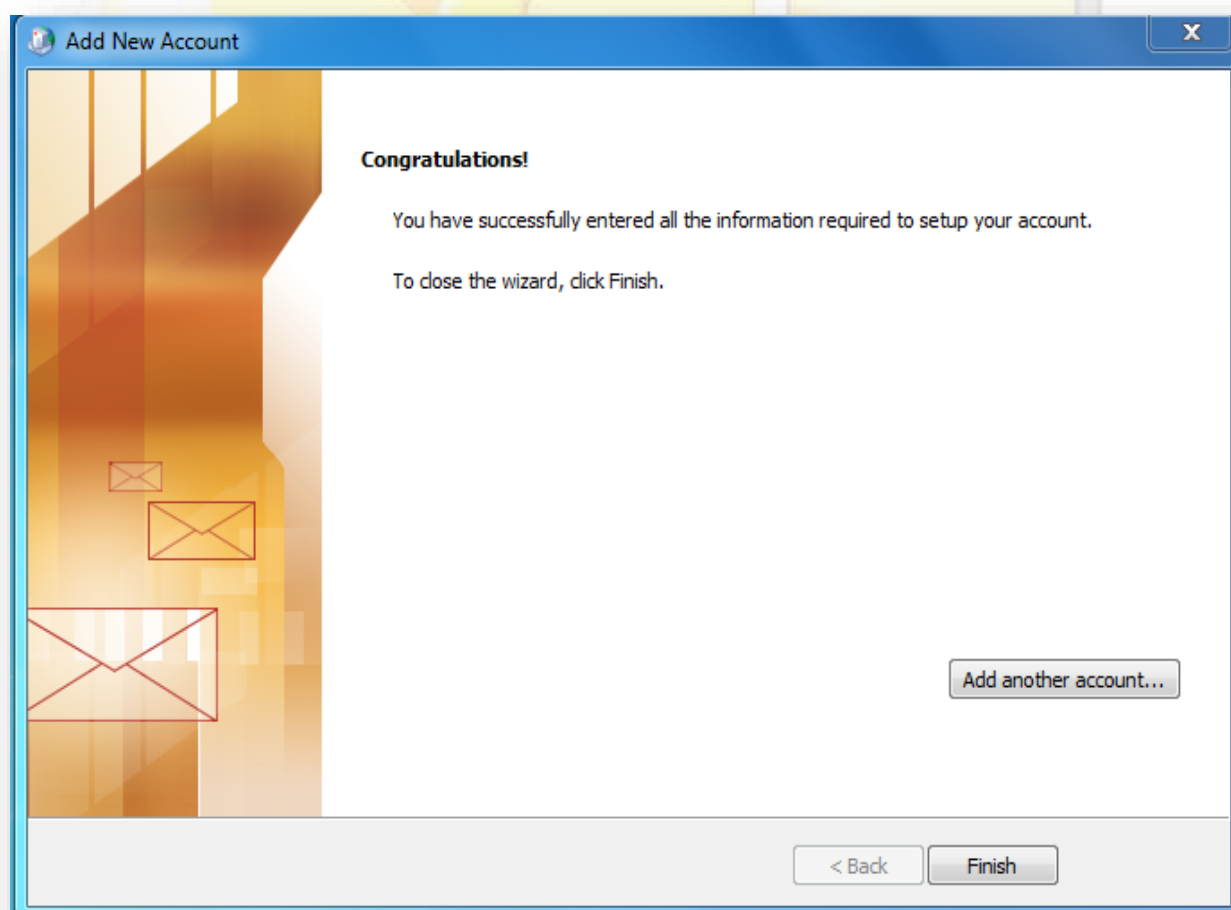
10. Now Click on **Test Account Settings**.

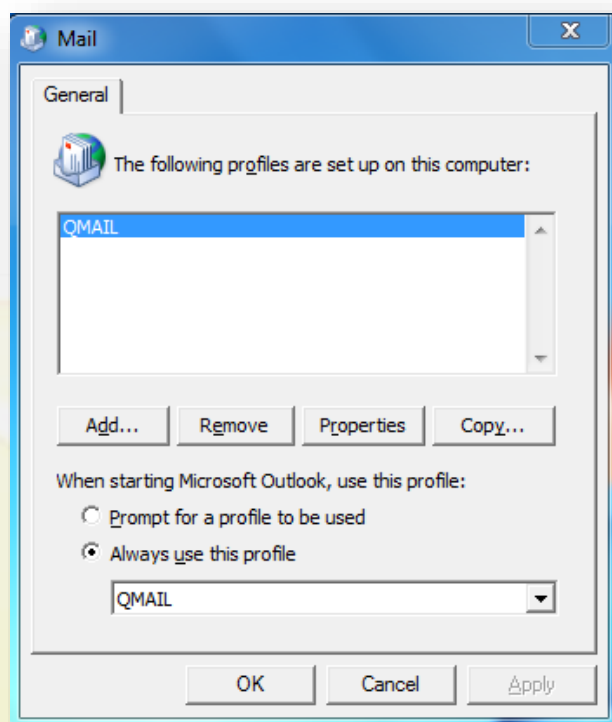


11. Now bellow Test Connection window will open, If all the configuration are right then it will show like below. And then click on **Close**.



12. After Clicking on next below window will display and then click on **Finish**.





13. Now Click OK on the below window.

14. Now to use Microsoft Outlook 2010 Click on Start ----- All Programs ----- Microsoft Office ----- Microsoft Outlook 2010. Now your Microsoft Outlook 2010 is configured for QMAIL E-mail.

